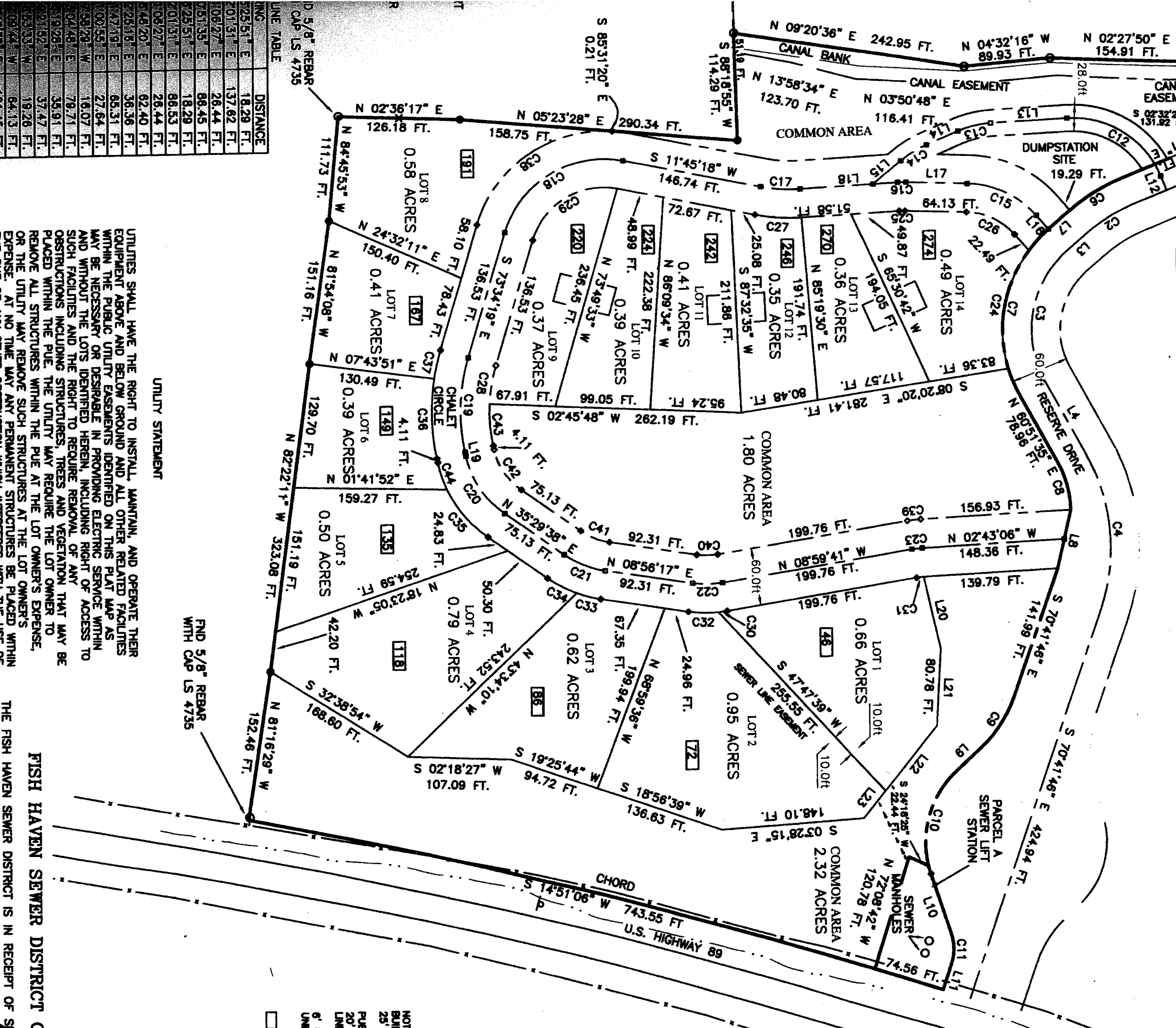


C16	100.00 FT.	8.71 FT.	8.71 FT.	N 06°18'57" W	14.24 FT.
C17	161.79 FT.	41.18 FT.	41.06 FT.	S 04°27'51" W	14.24 FT.
C18	105.96 FT.	157.80 FT.	143.62 FT.	N 30°54'30" W	85.19'35"
C19	200.00 FT.	99.13 FT.	98.12 FT.	N 87°46'16" W	28'23'55"
C20	100.00 FT.	74.24 FT.	72.55 FT.	S 56°45'43" W	42'32'09"
C21	100.00 FT.	46.35 FT.	45.93 FT.	S 22°12'58" W	26'33'21"
C22	100.00 FT.	31.30 FT.	31.17 FT.	S 00°01'42" E	17'55'58"
C23	100.00 FT.	10.95 FT.	10.95 FT.	N 05°51'24" W	06'16'35"
C24	140.72 FT.	130.24 FT.	125.64 FT.	N 07°55'52" W	53°01'43"
C25	70.00 FT.	6.10 FT.	6.09 FT.	N 00°19'57" W	04°59'21"
C26	70.00 FT.	57.09 FT.	55.52 FT.	N 25°31'39" E	46°43'49"
C27	191.79 FT.	46.81 FT.	46.68 FT.	S 04°27'51" W	14°34'55"
C28	170.00 FT.	40.64 FT.	40.54 FT.	N 80°25'12" W	13°41'46"
C29	75.98 FT.	113.12 FT.	102.95 FT.	N 30°54'30" W	85°19'35"
C30	130.00 FT.	8.85 FT.	8.85 FT.	S 07°02'39" E	03°54'04"
C31	70.00 FT.	7.67 FT.	7.66 FT.	N 05°51'24" W	06'16'35"
C32	130.00 FT.	31.84 FT.	31.76 FT.	S 01°55'20" W	14°01'54"
C33	130.00 FT.	25.92 FT.	25.88 FT.	S 14°39'02" W	11°25'30"
C34	130.00 FT.	34.33 FT.	34.23 FT.	S 27°55'43" W	15°07'51"
C35	130.00 FT.	66.41 FT.	65.69 FT.	S 50°07'42" W	29°16'07"
C36	230.00 FT.	83.72 FT.	83.26 FT.	S 86°27'27" W	20°51'20"
C37	230.00 FT.	30.28 FT.	30.26 FT.	N 77°20'36" W	07°32'33"
C38	135.96 FT.	185.21 FT.	171.22 FT.	N 34°32'49" W	78°02'58"
C39	130.00 FT.	14.24 FT.	14.23 FT.	N 05°51'24" W	06'16'35"
C40	70.00 FT.	21.91 FT.	21.82 FT.	S 00°01'42" E	17'55'58"
C41	70.00 FT.	32.44 FT.	32.15 FT.	S 22°12'58" W	26'33'21"
C42	70.00 FT.	51.97 FT.	50.78 FT.	S 56°45'43" W	42'32'09"
C43	170.00 FT.	43.62 FT.	43.50 FT.	S 85°22'51" W	14°42'07"
C44	130.00 FT.	30.10 FT.	30.04 FT.	S 71°23'46" W	13°16'02"



LINE	BEARING	DISTANCE
1	N 02°36'17" E	126.18 FT.
2	N 05°23'28" E	158.75 FT.
3	N 84°45'53" W	111.73 FT.
4	N 24°32'11" E	150.40 FT.
5	N 81°54'08" W	151.16 FT.
6	N 07°45'51" W	129.70 FT.
7	N 82°22'11" W	323.08 FT.
8	S 32°38'54" W	168.60 FT.
9	N 81°16'29" W	152.46 FT.
10	S 02°18'27" W	107.09 FT.
11	S 19°25'44" W	94.72 FT.
12	S 18°56'39" W	136.63 FT.
13	S 03°28'15" E	148.10 FT.
14	S 14°51'06" W	743.55 FT.
15	S 03°28'15" E	148.10 FT.
16	N 72°08'42" W	120.78 FT.
17	S 24°16'26" W	22.44 FT.
18	N 02°43'06" W	148.36 FT.
19	N 08°59'41" W	199.76 FT.
20	N 08°56'17" E	92.31 FT.
21	N 08°56'17" E	92.31 FT.
22	N 02°43'06" W	148.36 FT.
23	N 08°59'41" W	199.76 FT.
24	N 08°56'17" E	92.31 FT.
25	N 08°56'17" E	92.31 FT.
26	N 02°43'06" W	148.36 FT.
27	N 08°59'41" W	199.76 FT.
28	N 08°56'17" E	92.31 FT.
29	N 08°56'17" E	92.31 FT.
30	N 02°43'06" W	148.36 FT.
31	N 08°59'41" W	199.76 FT.
32	N 08°56'17" E	92.31 FT.
33	N 08°56'17" E	92.31 FT.
34	N 02°43'06" W	148.36 FT.
35	N 08°59'41" W	199.76 FT.
36	N 08°56'17" E	92.31 FT.
37	N 08°56'17" E	92.31 FT.
38	N 02°43'06" W	148.36 FT.
39	N 08°59'41" W	199.76 FT.
40	N 08°56'17" E	92.31 FT.
41	N 08°56'17" E	92.31 FT.
42	N 02°43'06" W	148.36 FT.
43	N 08°59'41" W	199.76 FT.
44	N 08°56'17" E	92.31 FT.
45	N 08°56'17" E	92.31 FT.
46	N 02°43'06" W	148.36 FT.
47	N 08°59'41" W	199.76 FT.
48	N 08°56'17" E	92.31 FT.
49	N 08°56'17" E	92.31 FT.
50	N 02°43'06" W	148.36 FT.
51	N 08°59'41" W	199.76 FT.
52	N 08°56'17" E	92.31 FT.
53	N 08°56'17" E	92.31 FT.
54	N 02°43'06" W	148.36 FT.
55	N 08°59'41" W	199.76 FT.
56	N 08°56'17" E	92.31 FT.
57	N 08°56'17" E	92.31 FT.
58	N 02°43'06" W	148.36 FT.
59	N 08°59'41" W	199.76 FT.
60	N 08°56'17" E	92.31 FT.
61	N 08°56'17" E	92.31 FT.
62	N 02°43'06" W	148.36 FT.
63	N 08°59'41" W	199.76 FT.
64	N 08°56'17" E	92.31 FT.
65	N 08°56'17" E	92.31 FT.
66	N 02°43'06" W	148.36 FT.
67	N 08°59'41" W	199.76 FT.
68	N 08°56'17" E	92.31 FT.
69	N 08°56'17" E	92.31 FT.
70	N 02°43'06" W	148.36 FT.
71	N 08°59'41" W	199.76 FT.
72	N 08°56'17" E	92.31 FT.
73	N 08°56'17" E	92.31 FT.
74	N 02°43'06" W	148.36 FT.
75	N 08°59'41" W	199.76 FT.
76	N 08°56'17" E	92.31 FT.
77	N 08°56'17" E	92.31 FT.
78	N 02°43'06" W	148.36 FT.
79	N 08°59'41" W	199.76 FT.
80	N 08°56'17" E	92.31 FT.
81	N 08°56'17" E	92.31 FT.
82	N 02°43'06" W	148.36 FT.
83	N 08°59'41" W	199.76 FT.
84	N 08°56'17" E	92.31 FT.
85	N 08°56'17" E	92.31 FT.
86	N 02°43'06" W	148.36 FT.
87	N 08°59'41" W	199.76 FT.
88	N 08°56'17" E	92.31 FT.
89	N 08°56'17" E	92.31 FT.
90	N 02°43'06" W	148.36 FT.
91	N 08°59'41" W	199.76 FT.
92	N 08°56'17" E	92.31 FT.
93	N 08°56'17" E	92.31 FT.
94	N 02°43'06" W	148.36 FT.
95	N 08°59'41" W	199.76 FT.
96	N 08°56'17" E	92.31 FT.
97	N 08°56'17" E	92.31 FT.
98	N 02°43'06" W	148.36 FT.
99	N 08°59'41" W	199.76 FT.
100	N 08°56'17" E	92.31 FT.
101	N 08°56'17" E	92.31 FT.
102	N 02°43'06" W	148.36 FT.
103	N 08°59'41" W	199.76 FT.
104	N 08°56'17" E	92.31 FT.
105	N 08°56'17" E	92.31 FT.
106	N 02°43'06" W	148.36 FT.
107	N 08°59'41" W	199.76 FT.
108	N 08°56'17" E	92.31 FT.
109	N 08°56'17" E	92.31 FT.
110	N 02°43'06" W	148.36 FT.
111	N 08°59'41" W	199.76 FT.
112	N 08°56'17" E	92.31 FT.
113	N 08°56'17" E	92.31 FT.
114	N 02°43'06" W	148.36 FT.
115	N 08°59'41" W	199.76 FT.
116	N 08°56'17" E	92.31 FT.
117	N 08°56'17" E	92.31 FT.
118	N 02°43'06" W	148.36 FT.

UTILITIES SHALL HAVE THE RIGHT TO INSTALL, MAINTAIN, AND OPERATE THEIR EQUIPMENT ABOVE AND BELOW GROUND AND ALL OTHER RELATED FACILITIES WITHIN THE PUBLIC UTILITY EASEMENTS IDENTIFIED ON THIS PLAT MAP AS MAY BE NECESSARY OR DESIRABLE IN PROVIDING ELECTRIC SERVICE WITHIN AND WITHOUT THE LOTS IDENTIFIED HEREIN, INCLUDING RIGHT OF ACCESS TO SUCH FACILITIES INCLUDING STRUCTURES, TREES AND VEGETATION THAT MAY BE PLACED WITHIN THE PUE. THE UTILITY MAY REQUIRE THE LOT OWNER TO REMOVE ALL STRUCTURES WITHIN THE PUE AT THE LOT OWNER'S EXPENSE. OR THE UTILITY MAY REMOVE SUCH STRUCTURES AT THE LOT OWNER'S EXPENSE. AT NO TIME MAY ANY PERMANENT STRUCTURES BE PLACED WITHIN

FISH HAVEN SEWER DISTRICT C
THE FISH HAVEN SEWER DISTRICT IS IN RECEIPT OF \$

NOT BUIL 25' PUB 20' LINE 6" 1" UNL